

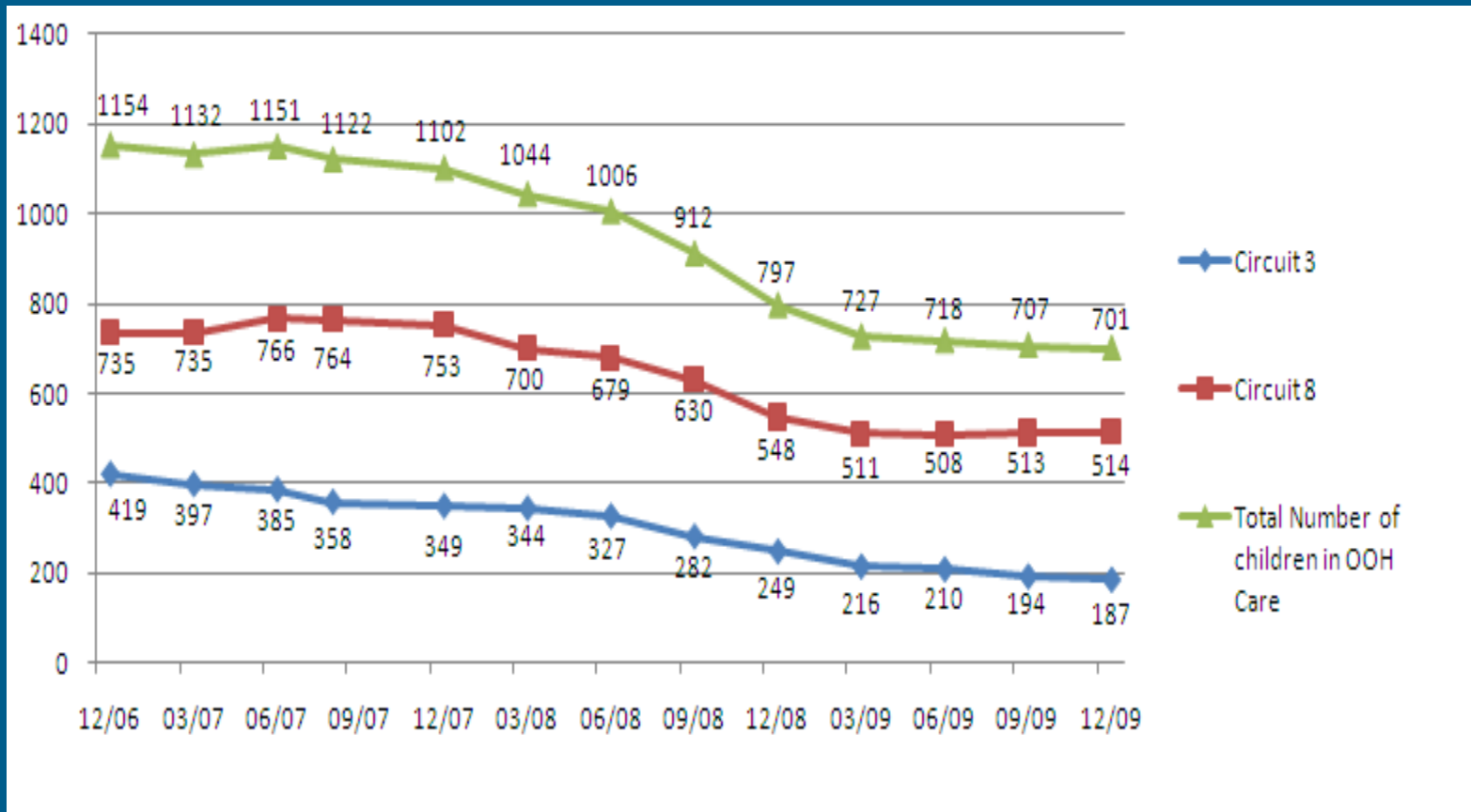


Information to Support Development of SW Library Partnership & Resources for Families

- ✓ **Department of Children and Families**
- ✓ **Partnership For Strong Families**

Goal: Safe Reduction in the Number of Children in Foster Care (40% reduction since 12/06)

NUMBER OF CHILDREN IN FOSTER CARE

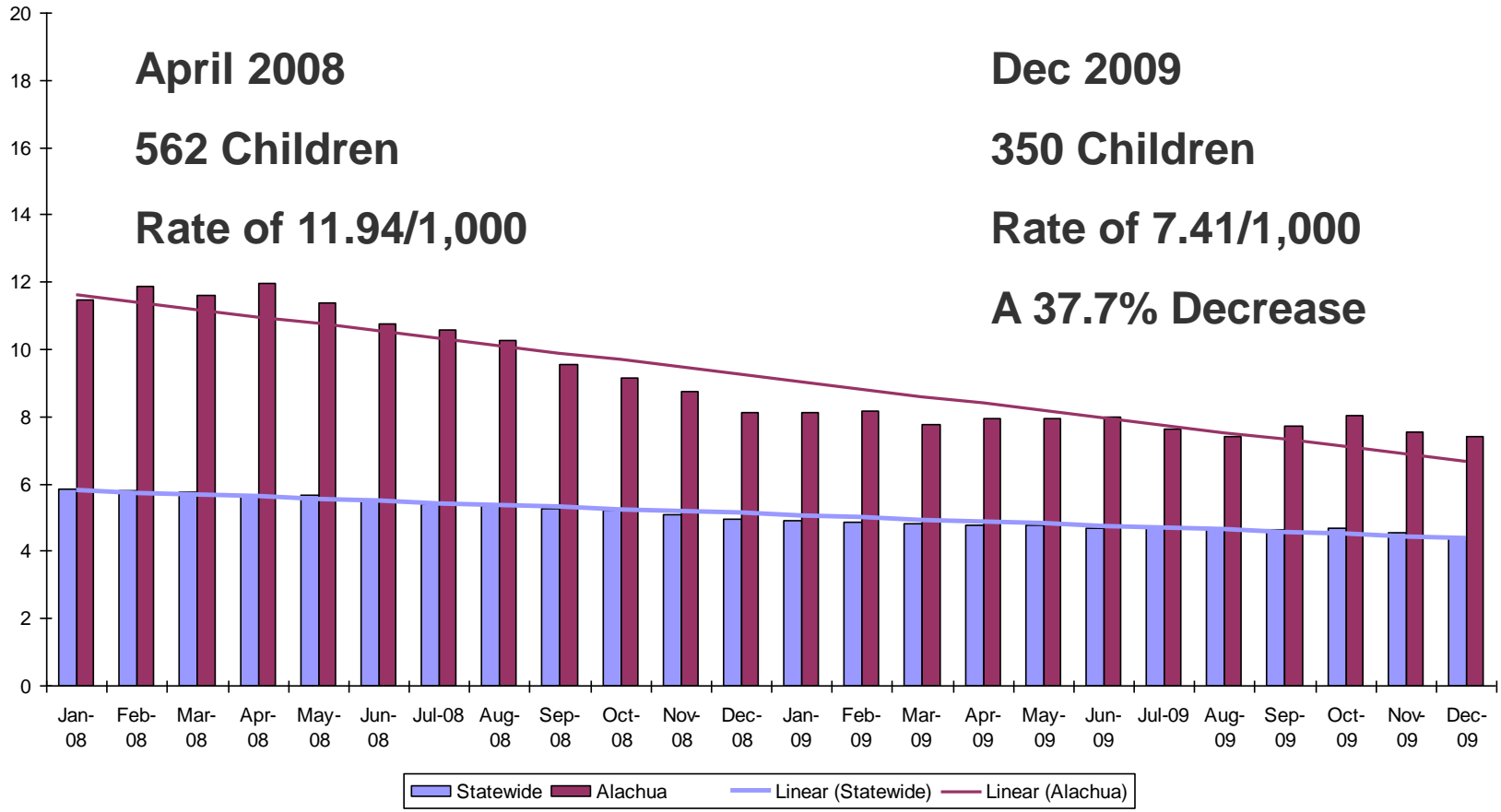


Why? Research Is Measuring the Effects of Foster Care

Illinois – Data review of thousands of school aged children in the child welfare system	Children Who Stayed With Families	Children Who Entered Foster Care
Arrested at least once	14%	44%
Became teen mothers	33%	56%
Held a job at least 3 months	33%	20%

Source: Dr. Joseph Doyle, “Child Welfare and Child Outcomes: Measuring the Effects of Foster Care, MIT Sloan & NBER

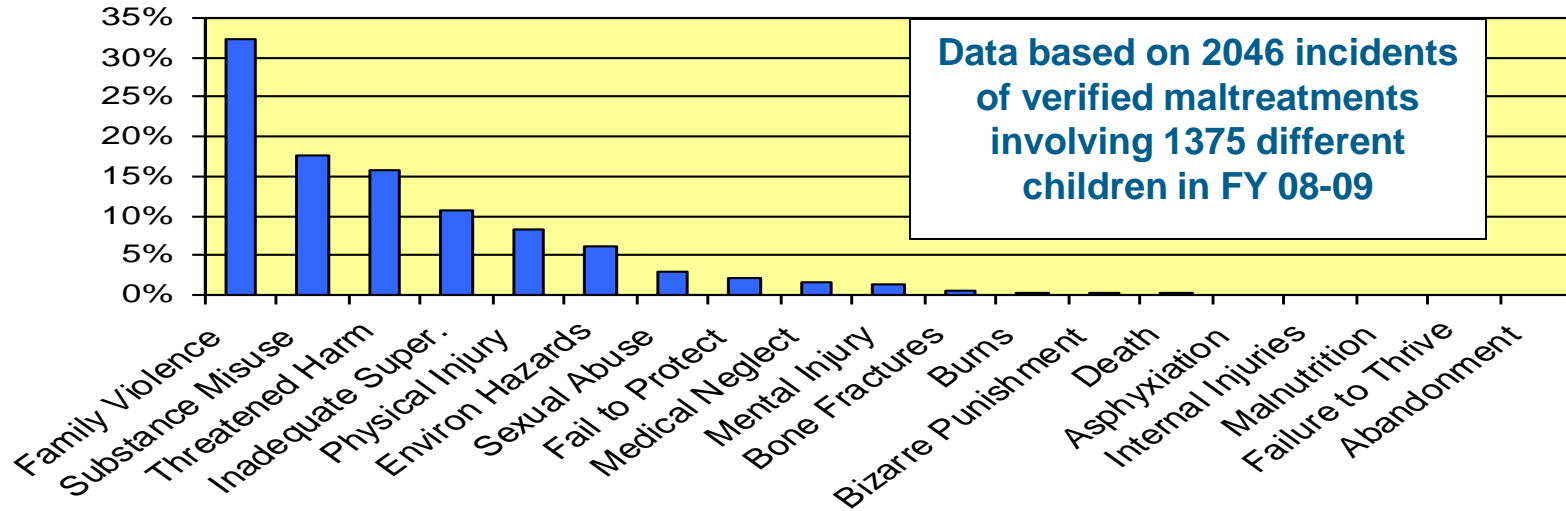
Some Comparisons: Rate of Children in Out of Home Care -



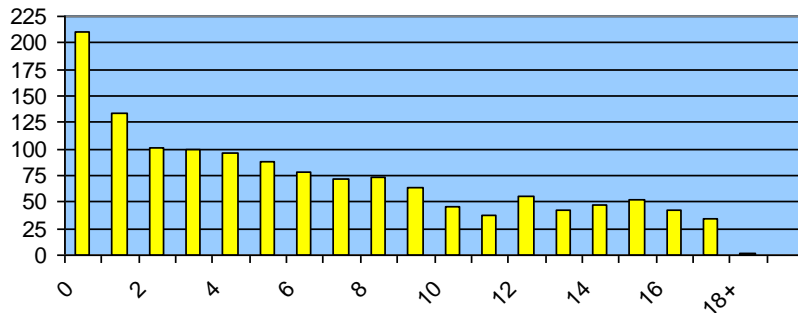
Florida - 4.43 Children per 1,000 in the Population

Alachua Co. – Child Maltreatment 08-09

Alachua Co. Maltreatment Types 2008-09



Alachua Co. - Ages of Child Victims Unduplicated Total - 1,375 for FY 08-09



46% - age 4 or younger

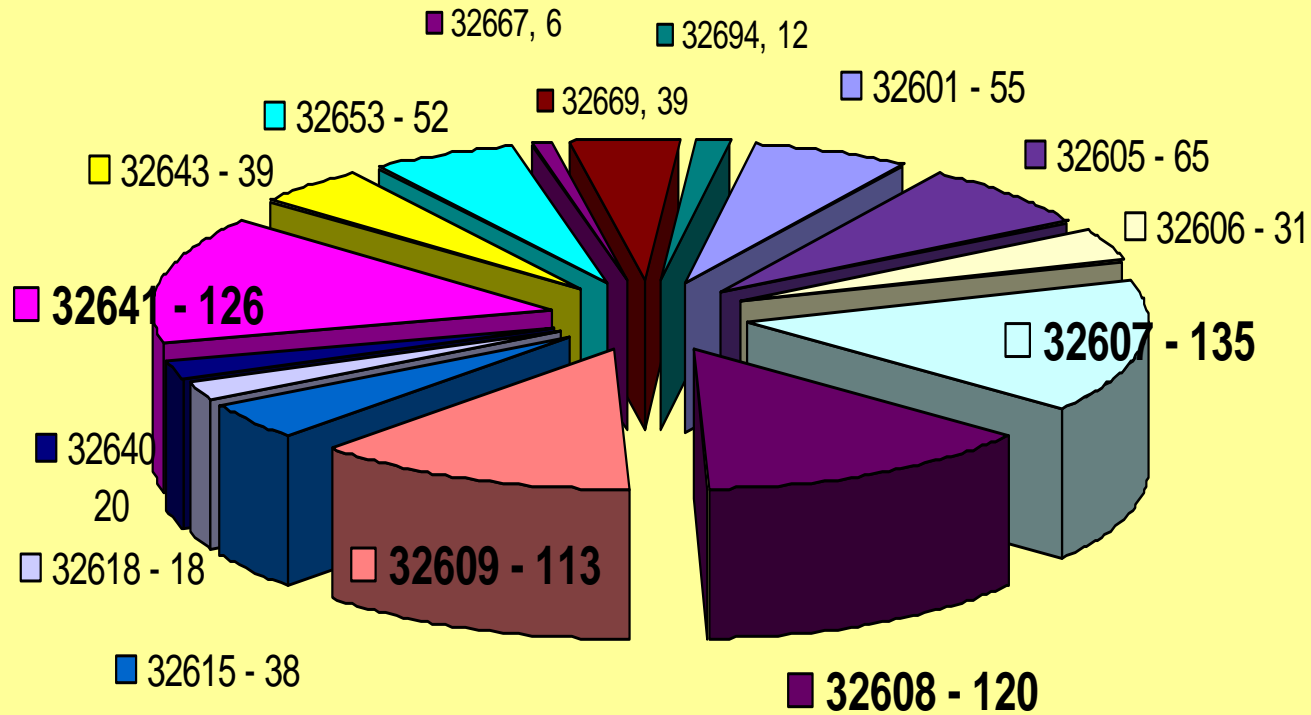
33% - elementary age

22% - middle & HS

2008-2009 Maltreatment Rate per 1,000 Children in the General Population

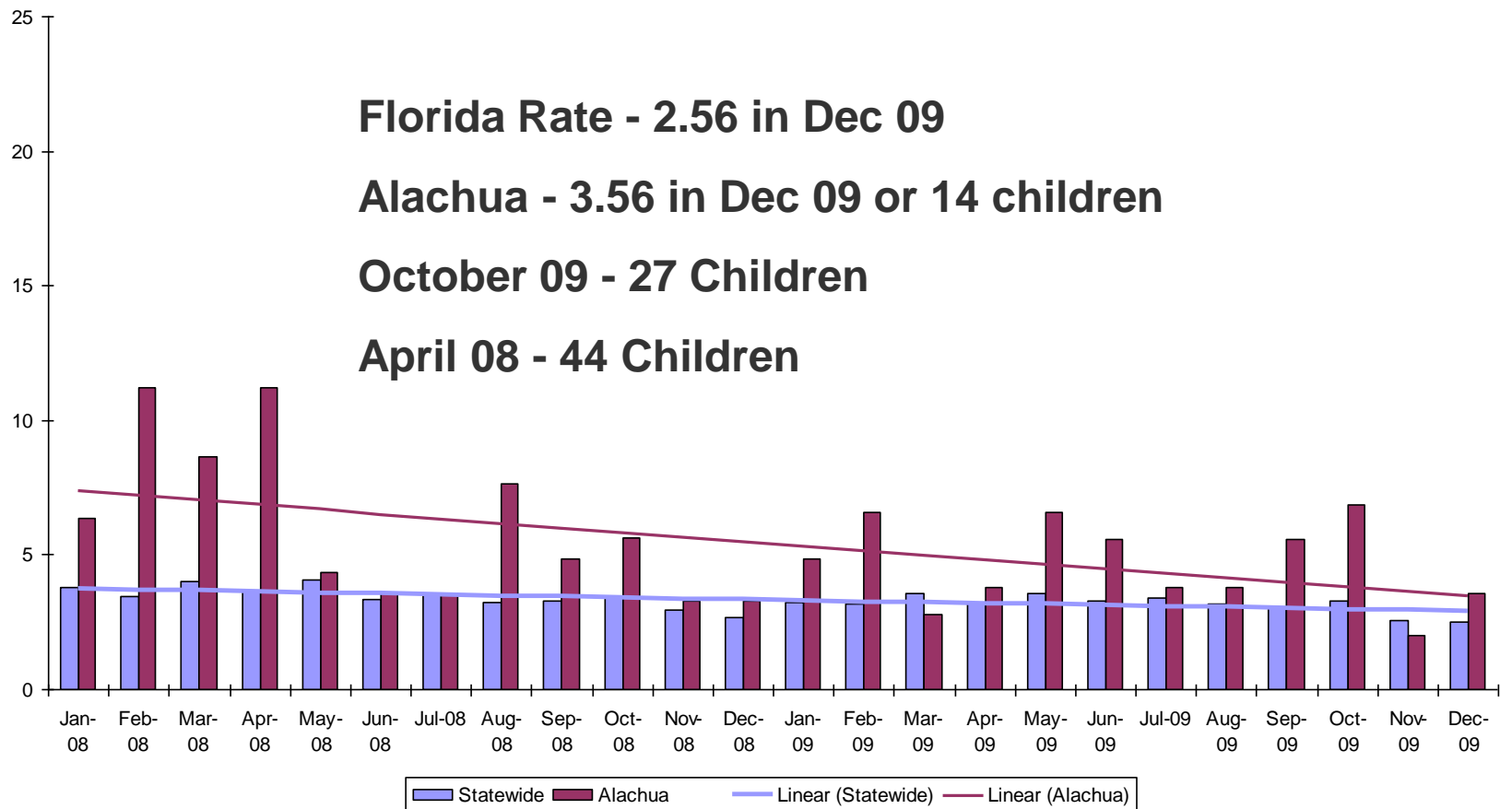
Circuit	County	Population 2009				2008-2009 Victims by Most Serious Finding				
		Black	Other	White	Total	No Indication	Some Indication	Verified	Total	Maltreatment Rate
8	ALACHUA	14260	3140	29816	47216	1,646	262	1,064	2,972	27.04
8	BAKER	841	65	5825	6731	225	44	116	385	20.68
8	BRADFORD	1122	79	4694	5895	211	68	65	344	13.23
8	GILCHRIST	415	41	3402	3858	130	21	59	210	18.35
8	LEVY	1293	138	7596	9027	450	24	186	660	24.73
8	UNION	426	24	2769	3219	140	42	39	221	14.54
	Statewide	936421	161638	3099228	4E+06	95343	55390	38757	2E+05	11.08
2	LEON	22907	2127	30029	55063	1,632	464	571	2,667	12.44
5	MARION	11743	1512	54037	67292	2,732	1,301	862	4,895	15.37
1	OKALOOSA	6279	2510	37555	46344	1,273	727	793	2,793	20.53

2009 Total # of Verified Cases per Zip Code



■ 32601
 ■ 32605
 ■ 32606
 ■ 32607
 ■ 32608
 ■ 32609
 ■ 32615
 ■ 32618
 ■ 32640
 ■ 32641
 ■ 32643
 ■ 32653
 ■ 32667
 ■ 32669
 ■ 32694

How Many Children are Sheltered Each Month?



Children Sheltered in Out of Home Care

2/09 to 12/09 Data compiled by Family Preservation Services

Zip Code	Asian Indian	Biracial	Black	Hispanic	White	(blank)	Grand Total
Grand Total	2	3	136	8	81	3	233
32641 EGNL			31		4	1	36
32607 WGNL		1	15		10	2	28
32609 NE GNL			13	1	13		27
32608 SW GNL			10	2	10		22
32601 ECGNL		2	13		1		16
32605 NCGNL			1	5	8		14
32640 Hawthorne			10		4		14
32643 High Sprgs					10		10
32615 Alachua	2		1		6		9
32653 N GNL			5		2		7

Ages of Children Coming into Care - Alachua Co. 2/09-12/09

Age in Years	Asian Indian	Biracial	Black	% Black	Hispanic	White	% White	(blank)	Grand Total	% Overall
0-5	2	2	80	59.70%		46	34.33%		134	57.51%
6 to 11		1	34	14.59%	5	17	7.30%	1	58	24.89%
12+			20	8.58%	1	36	8.15%		39	16.74%
Grand Total	2	3	136	58.37%	8	81	34.76%	3	233	100.00%

Some Economic Indicators

	32601	32607	32608	32609	32641
Families Children <2, FS Benefits	127	279	205	233	289
PG Women, FS Benefits	43	90	78	77	94



Video:
The Library Partnership

[

]

Questions?